

Communication and Language

We will be reading lots of fiction and non-fiction texts about the outdoors, using the format of the texts to create our own instructions.

We will practice using time connectives to describe events in detail.

Opportunities to develop communication will be provided each day to improve our vocabularies and speaking/listening skills.

Personal, Social and Emotional Development

We will be learning about self-regulation and following instructions using a variety of different games including treasure hunts and Simon Says.

We will be thinking about the qualities that make a good friend in our PSHE lessons.

Physical Development

We will be doing Fundamental Skills in PE to support our physical development and gross motor.

Our fine motor skills will be developed with daily tasks, and we will start to write most letters correctly using the correct tripod grip.

Literacy

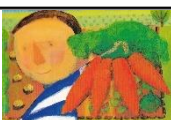
We will be continuing our learning of Phase 3 Phonics, refining our understanding of digraphs and learning trigraphs (three letter sounds).

We will be using our phonic knowledge to read and write captions and simple sentences, improving our fluency with daily practice.

Using Talk for Writing, we will be learning the story of What the Ladybird Heard and creating our own stories using the story format.

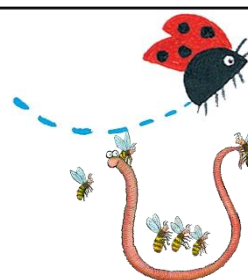
Mathematics

This term we will be looking at 3D shapes and numerical patterns, exploring the concept of odd and even as well as patterns in the environment. We will also recap our deeper understanding of 0-8 and focus on building 9 and 10.



Term 4:

Come Outside



Key texts: What the Ladybird Heard, Jasper's Beanstalk, Superworm, Oliver's Vegetables.

Understanding the World

We will be exploring different festivals such as St Patrick's Day, Easter, Passover and the start of Ramadan.

We will be visiting Slimbridge WWT to learn more about the natural world.

We will be looking closely at the outdoors, especially the life cycles of plants and animals with a visit from our very own baby chicks.

Expressive Arts and Design

We will be looking at sculpture and using different techniques to create our own clay mini beasts.

We will use cooking sessions to understand where food comes from and will design our own life cycle posters and collages.

RE

We will be looking at the 'Desert to Garden' topic within our RE lessons.

We will be learning about the Catholic Social Teaching of the Option for the Poor and Vulnerable, considering how Jesus wants us to help people so that we can live in a fair world.

PE takes place on Tuesday afternoons.

Forest School takes place on Thursday afternoons.