



Welcome

Miss Kinshaw

Associate Headteacher

Ofsted

The school has the following strengths

- Safeguarding is highly effective. Leaders have created a strong culture of vigilance to ensure pupils are kept safe.
- Care and guidance for pupils has improved and is valued and appreciated by parents.
- Teaching and learning in the early years is improving to enable children to make strong progress from their starting points.

- ▶ Caring
- ▶ Pastoral provision is good
- ▶ The children are safe
- ▶ Early Years prepares children well for school

Ofsted

Summary of key findings for parents and pupils

This is an inadequate school

- Over time, school leaders and governors have not taken swift action to improve teaching, learning and assessment. As a result, pupils' outcomes in all key stages are below those of other pupils nationally, particularly in mathematics and for the most able pupils.
- Until recently, the school did not have an effective assessment system in place to evaluate pupils' progress from their starting points and to ensure that learning activities are closely matched to pupils' needs.
- Teachers' expectations of pupils' behaviour and attitudes towards learning are too low. As a result, there is much disruption to pupils' learning, which prevents them from achieving well.
- Leaders and governors have not ensured that additional funds for disadvantaged pupils and those who have special educational needs (SEN) and/or disabilities are spent effectively.
- There is no agreed and consistent approach to the teaching of reading, writing and mathematics throughout the school. Consequently, pupils do not receive appropriate teaching to enable them to achieve well.
- Systems for performance management are not in place to ensure that teachers know how to improve teaching and learning rapidly.
- Due to turbulent staff changes, there is very little capacity within middle leadership. Middle leaders are new in post and have not had sufficient training to monitor teaching and learning effectively.
- The curriculum does not provide pupils with the skills, knowledge and understanding needed to make progress and learn effectively. Therefore, many pupils have gaps in their learning. They have not been well prepared for the next stage in their education.

St Nicholas of Tolentine Catholic Primary School

Pennywell Road, Bristol BS5 0TJ

Inspection dates

17–18 October 2018

Overall effectiveness

Inadequate

Effectiveness of leadership and management

Inadequate

Quality of teaching, learning and assessment

Inadequate

Personal development, behaviour and welfare

Inadequate

Outcomes for pupils

Inadequate

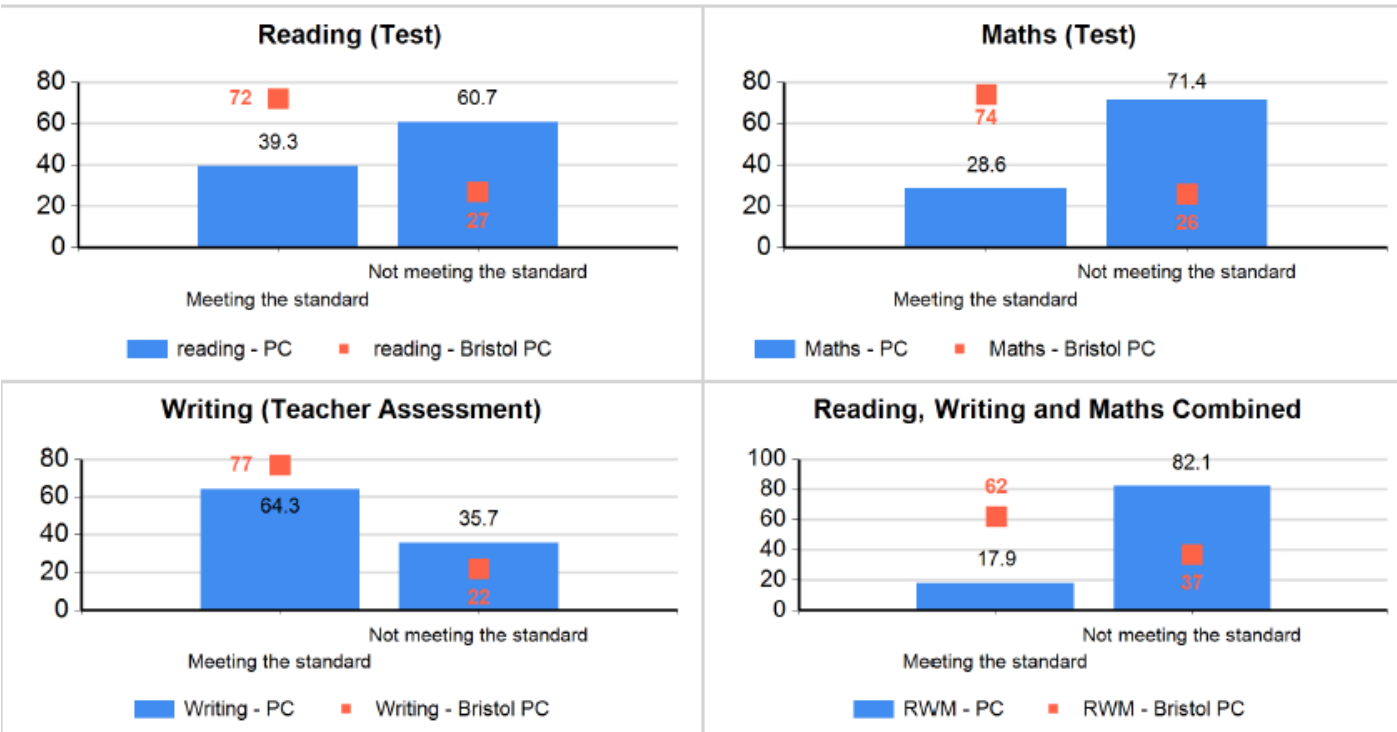
Early years provision

Requires improvement

- Over time, school leaders and governors have not taken swift action to improve teaching, learning and assessment. As a result, pupils' outcomes in all key stages are below those of other pupils nationally, particularly in mathematics and for the most able pupils.

Overall Attainment

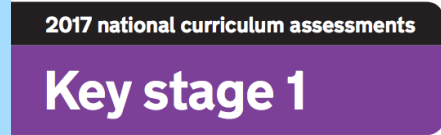
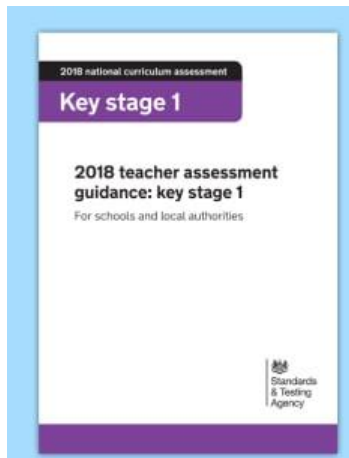
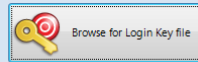
Figure 1: Attainment KS2 meeting the expected standard for your school and Bristol %



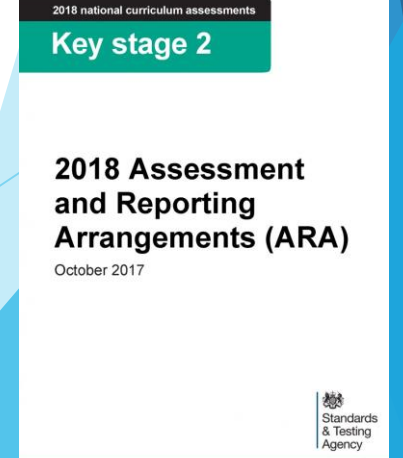
- Until recently, the school did not have an effective assessment system in place to evaluate pupils' progress from their starting points and to ensure that learning activities are closely matched to pupils' needs.



Please browse for your Login Key file



Phonics screening check
2017 scoring guidance



- Teachers' expectations of pupils' behaviour and attitudes towards learning are too low. As a result, there is much disruption to pupils' learning, which prevents them from achieving well.

4 C's - Our school rules



- Leaders and governors have not ensured that additional funds for disadvantaged pupils and those who have special educational needs (SEN) and/or disabilities are spent effectively.

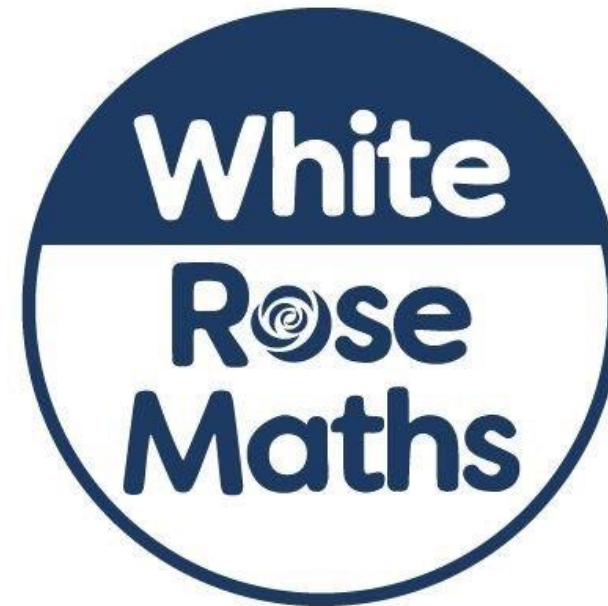
£ Impact  Improved literacy
Free school meals
FSM Narrowing the gaps
   Student progress
Ever 6 FSM
Pupil premium calculator

SEMH
Social, Emotional and Mental Health



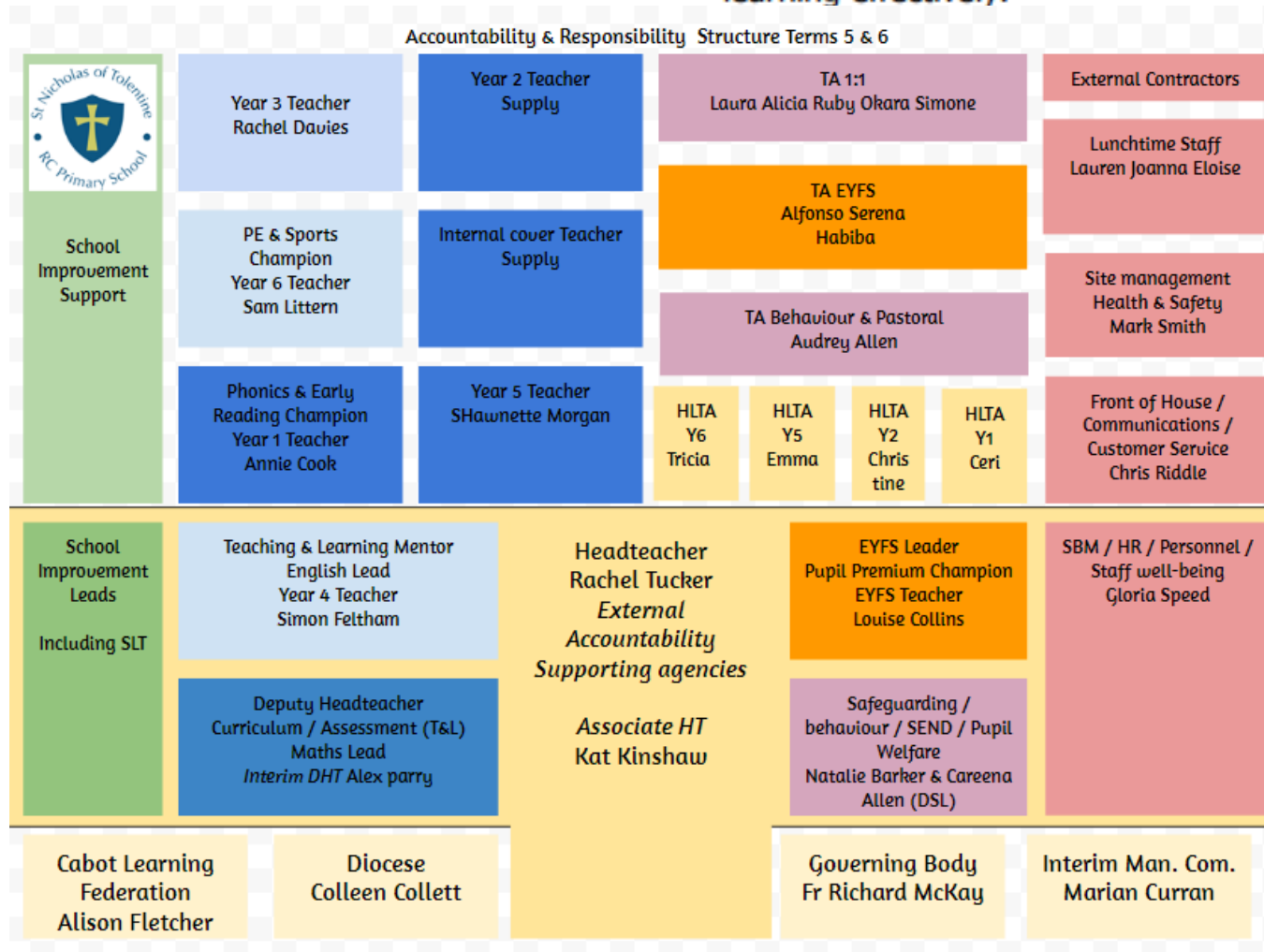
- There is no agreed and consistent approach to the teaching of reading, writing and mathematics throughout the school. Consequently, pupils do not receive appropriate teaching to enable them to achieve well.

- The curriculum does not provide pupils with the skills, knowledge and understanding needed to make progress and learn effectively. Therefore, many pupils have gaps in their learning. They have not been well prepared for the next stage in their education.



- Systems for performance management are not in place to ensure that teachers know how to improve teaching and learning rapidly.

- Due to turbulent staff changes, there is very little capacity within middle leadership. Middle leaders are new in post and have not had sufficient training to monitor teaching and learning effectively.



- Systems for performance management are not in place to ensure that teachers know how to improve teaching and learning rapidly.

- Due to turbulent staff changes, there is very little capacity within middle leadership. Middle leaders are new in post and have not had sufficient training to monitor teaching and learning effectively.



How can you help us?

- ▶ Providing an excellent start to life - academically, socially, emotionally and physically
- ▶ Working together as a community for our young people
- ▶ Regular communication - solving problems together
- ▶ Formalising parental support
- ▶ Raising pupil attainment - helping you to help your child
- ▶ Improving pupil, staff and community well-being - looking after each other

Feedback

- ▶ Please add your feedback to the sheet provided